

YW1074

4"集塵吸蓋
10 PCS 7.8/9 KGS 5'

Big Gulp Dust Hood



The Big Gulp is the dust collection accessory with many applications. From your chop saw to your lathe to even your drill press. Place it behind, underneath or where ever is convenient on your machine and it becomes a great catch all device for dust, chips and debris. The big gulp is 12-1/2" x 16" and accepts a standard 4" dust hose with a hose clamp.

Model NO.

Description

Drawing

YW1092

4"*2-1/4"錐形接頭
100 PCS 8.5/10 KGS 2.5'

Dust Collection Fittings - Adaptors

2 1/4" to 4" Enlarger



2 1/4" to 4" Enlarger is a brand new fitting made of flexible plastic. This is one of those fittings that woodworkers have wondered, why don't they make a fitting that goes directly from my 4" hose into my Shop Vac®? Well, here it is, an enlarger that accepts a 4" hose on one end, and the other plugs directly into a standard 2 1/4" Shop Vac® opening. A hose clamp is required on the 4" end for proper connection .

YW1078

4"透明木工車床集塵蓋
8 PCS 9/10 KGS/ 4.7'
(20.9"x 19"x 18.7")

Lathe Dust Hood



A clear protective shield that swings up and out of the way. The hood includes a Super Strong Magnetic Mounting Bracket and Clamp. Instant positioning along the length of any lathe without clamps. Works on virtually any lathe.

A 6" x 9" opening is ideal for pen crafting. Has a standard 4" flange opening.

C-03

4"吊勾
4" Hose and Pipe Hanger

YW1093

4"*2-1/2"錐形接頭
4"x2-1/2" REDUCER
150 PCS 18/20 KGS 4.7'

4" to 2 1/2" Dust Collection Hose Reducer



4" to 2½" allows you to reduce from a 4" hose down to a 2½" hose. Hose clamps are required for this type of connection or the small end accepts a standard 2¼" Shop-Vac® hose end. Only one hose clamp is required on the opposite 4" end for this type of connection.

YW1094

4"*2-1/4"錐形接頭
4"x2-1/4" REDUCER
150 PCS 18/20 KGS 4.7'

YW1095

4"*2"錐形接頭
4"x2" REDUCER
150 PCS 18/20 KGS 4.7'

4" to 2" Reducer



4" to 2" allows you to reduce from a 4" hose down to a 2" hose. Hose clamps are required for this type of connection.

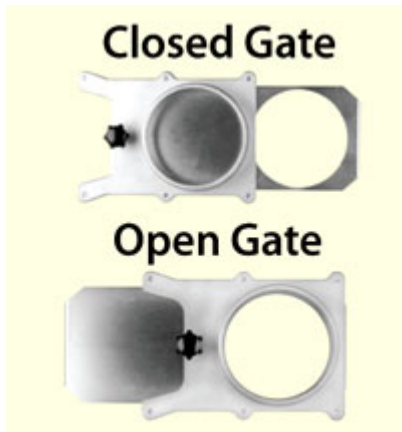
Model NO.	Description	Drawing
YW1096	<p>錐型風管 UNIVERSAL ADAPTER 100 PCS 17.5/19 KGS 4.1'</p>	

4" to 1" Adaptor



4" to 1" Adaptor is tapered from the 4" O.D. to the 1" O.D. Cut the adaptor at the desired diameter to fit to your machine port or smaller I.D. hose. Flat portions are at sizes of: 4", 3", 2-1/2" and 1" for hose to hose splices. Hose clamps are required.

Aluminum Through Blast Gate



Tired of constantly having to clean the build up of dust & debris out of your blastgates? With the new Through Blastgates, the gate slides all the way through the casing which in turn cleans out the blastgate everytime you open it.

YW1097

4"鋁製活動式風閘
Self-Cleaning Blast Gates

型 號
Model NO.

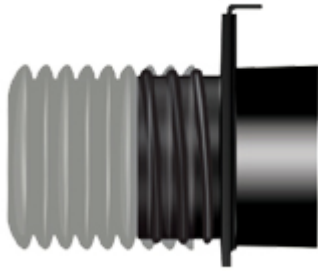
品 名
Description

圖 樣
Drawing

YW1098

2-1/2"鋁製風閘
2-1/2" ALUMINUM BLAST
GATE
100 PCS 34/35 KGS 2.9'
(27"x 16.1"x 11.5')

4" Threaded Quick Disconnect Blast Gate



The threaded quick disconnect blast gate allows you to connect your 4" hose directly to the opening of one end of the blast gate without the use of a hose clamp. The blast gate has tapered quick connect opening on the opposite side for easy connection to dustport flanges.

YW1099

4"單螺旋快速風閘

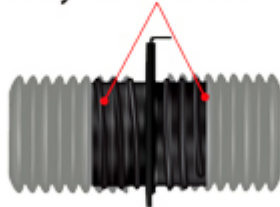
Model NO.

Description

Drawing

4" Threaded On Bith Sides Blast Gate

Threaded on both sides
for easy hose connection



The threaded blast gate allows you to connect your 4" hose directly to the opening of the blast gate without the use of a hose clamp. The blast gate is threaded on both ends. You simply attach your 4" hose by screwing the hose on the threads of the blast gate

YW1100

4"雙螺旋風閘

YW1101

4" 45 度彎曲接頭
4"45 ° ELBOW

YW1102

4" 快速接頭 (右旋)
4" THREAD SPLICE
150 PCS 20/22 KGS 8.4'
(26.8"x 22.4"x 22")

4" Dust Collection Hose Treaded Quick Connect



4" Threaded Quick Connect is designed to be pressed on to any 4" taper diameter opening for a quick and easy fit. The opposite end will accept a 4" hose by simply threading it on . No hose clamp required.

]

YW1103

4"PVC 透明直管

YW2000

4" 透明集塵配件組
4" CLEAR DUST COLLECTING
NETWORK

YW1104

4”活動式風閘
Self-Cleaning Blast Gates

YW1105

4”*2-1/2”快速接頭

DCK-1

DCK-1 starter set includes:

(2) 4"x10' Hose

(1) Universal Dust Hood (W1010)

(1) Jointer Dust Hood (W1001)

(1) Table Saw Dust Hood (W1005)

(2) 4" Hose Clamp

DCK-2

DCK-2 Deluxe set includes:

(4) 4" Blast Gates (W1007)

(2) 4"x10' Hoses

(1) Universal Dust Hood (W1010)

(1) Jointer Dust Hood (W1001)

(1) Table Saw Dust Hood (W1005)

(1) Floor Sweep Dust Hood (W1003)

(1) 4" Y-Fitting (W1015)

(10) 4" Hose Clamp

Model NO.

Description

Drawing

YW1106

地板吸塵器

Woodworking **DUST-COLLECTOR**